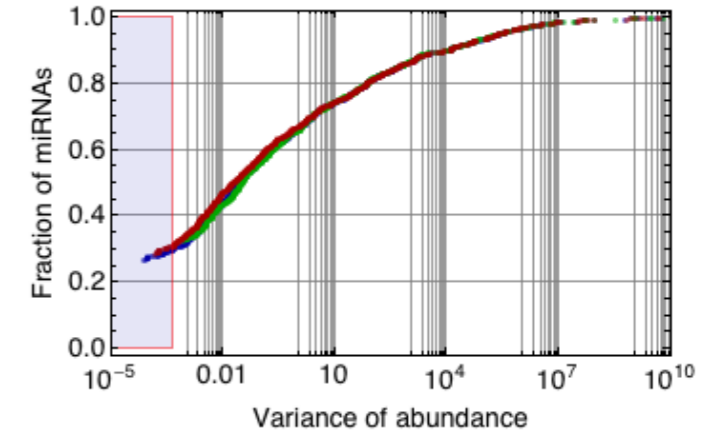


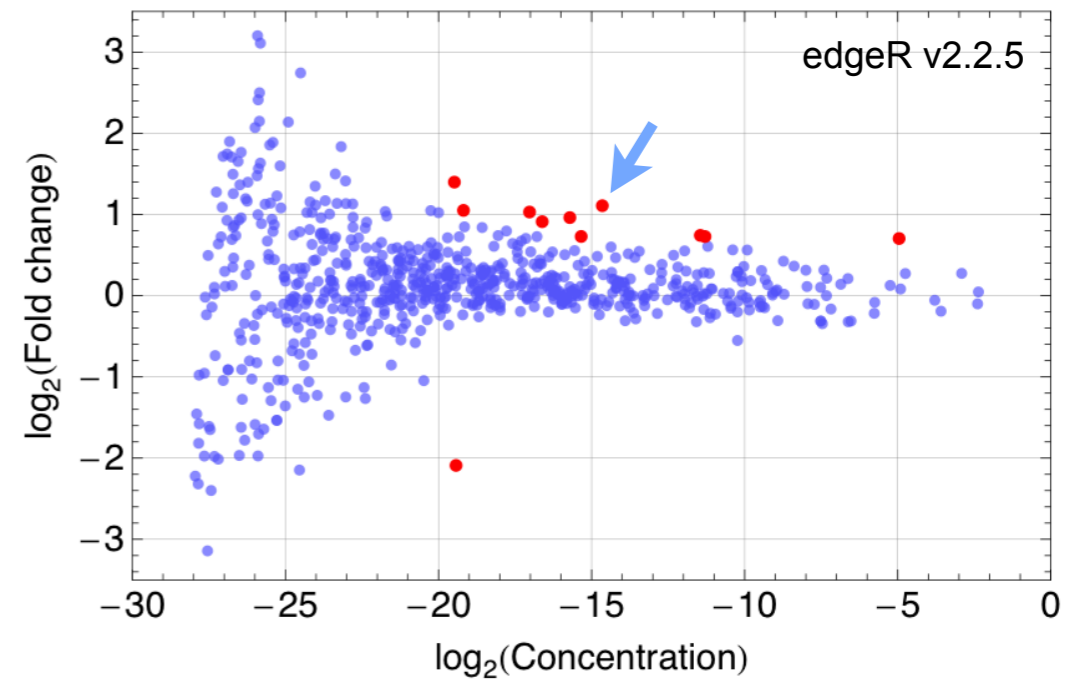
KIRC 56, prenorm'd, common dispersion, 732 q30 miRNAs

732 miRNAs with variances above the 30th percentile

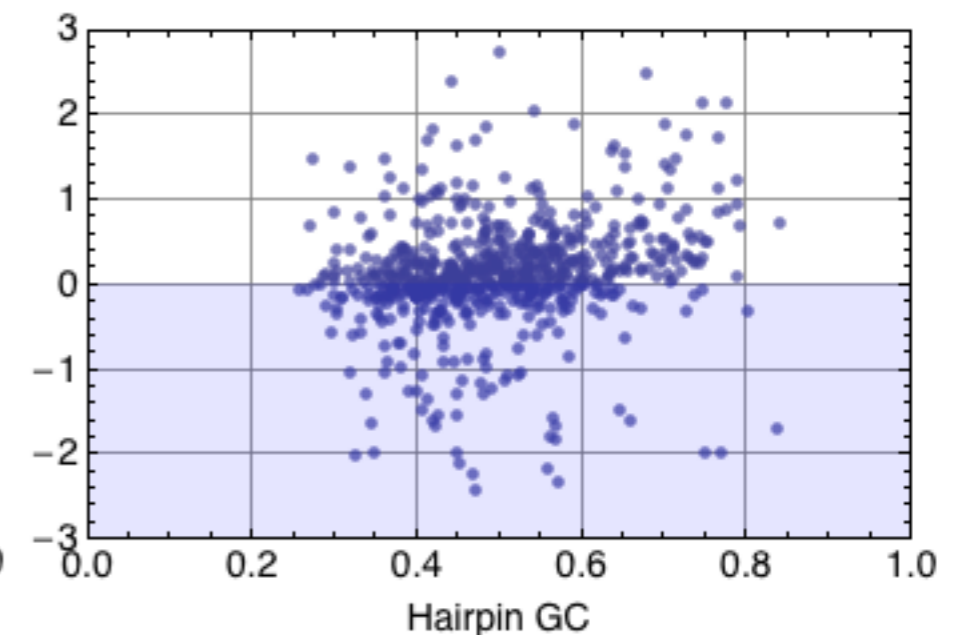
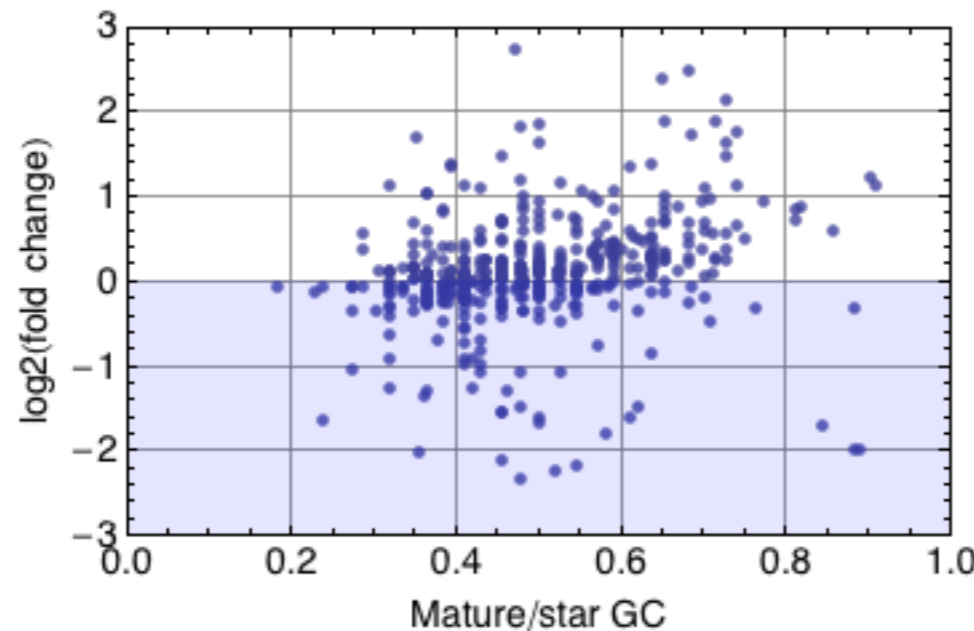


11 DA miRNAs, B-H p-val<0.05

miRNA	logConc	logFC	adj.P.Val
hsa-mir-23c	-19.43	-2.09	2.10E-08
hsa-mir-326	-14.65	1.108	2.13E-05
hsa-mir-374c	-17.03	1.031	0.00087
hsa-mir-874	-15.71	0.962	0.00098
hsa-mir-1249	-19.48	1.400	0.00123
hsa-mir-1976	-16.61	0.912	0.00389
hsa-mir-204	-11.45	0.743	0.0195
hsa-mir-150	-11.30	0.729	0.0225
hsa-mir-99b	-4.96	0.704	0.0296
hsa-mir-330	-15.34	0.730	0.0296
hsa-mir-1274b	-19.18	1.051	0.0309



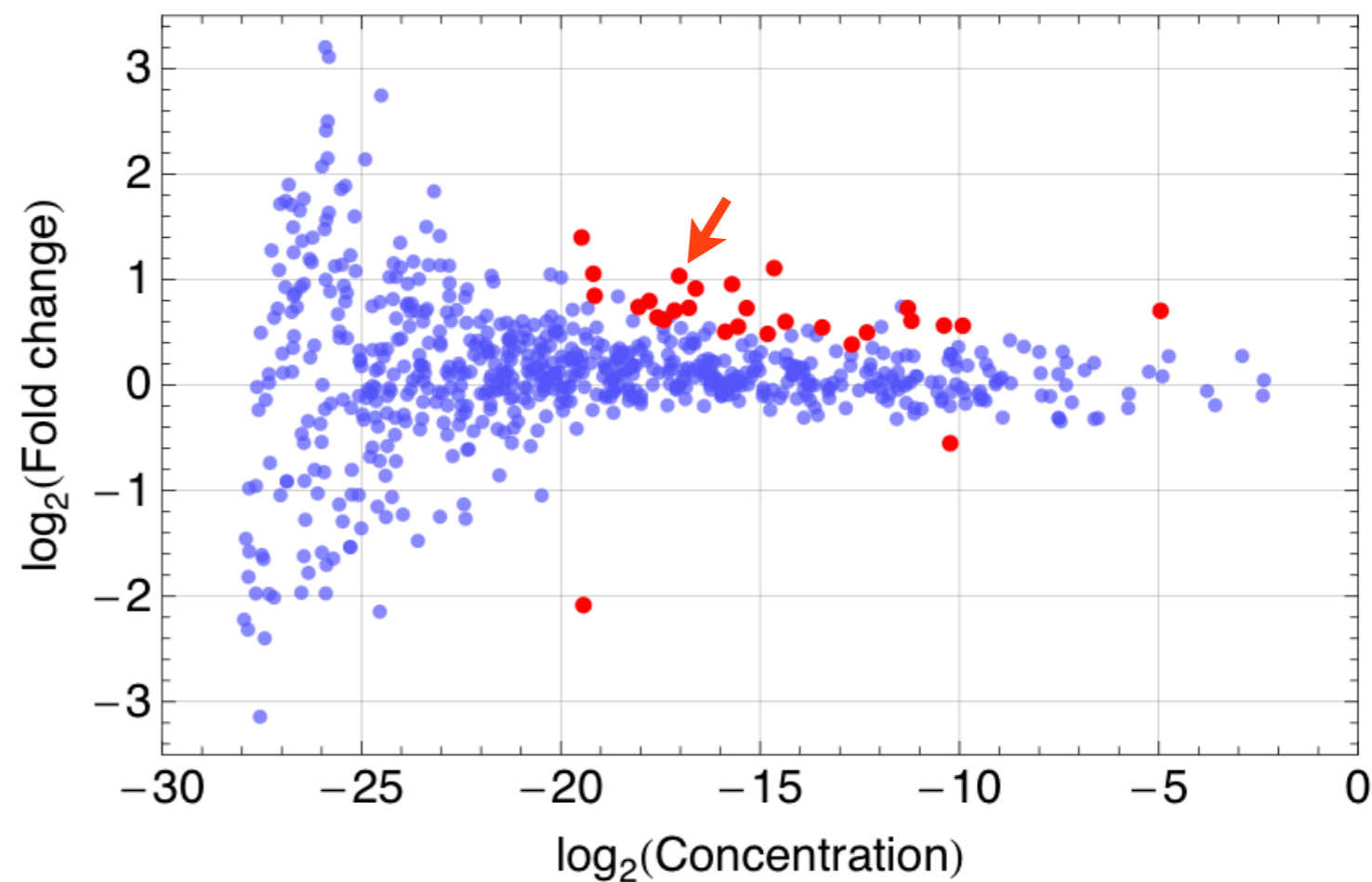
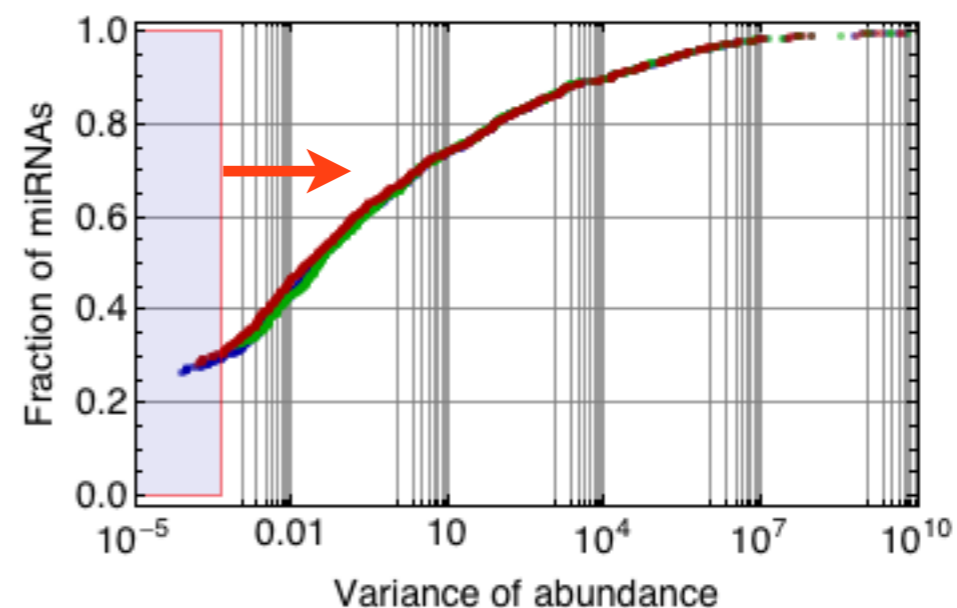
Relationship between fold change and GC content for 482 mature strands and 726 hairpins



KIRC 56, prenorm'd, common dispersion, 732 miRNAs

28 miRNAs, B-H p-val<0.05

miRNA	logConc	logFC	adj.P.Val
hsa-mir-23c	-19.43154	-2.08458	2.08E-10
hsa-mir-326	-14.64962	1.10821	1.91E-07
hsa-mir-1976	-16.61670	0.91484	2.64E-05
hsa-mir-99b	-4.95649	0.70417	5.85E-05
hsa-mir-330	-15.33939	0.72937	9.92E-05
hsa-mir-1249	-19.47904	1.39842	0.00014
hsa-mir-331	-14.36465	0.60041	0.00066
hsa-mir-3605	-16.78850	0.73168	0.00103
hsa-mir-125a	-10.39064	0.56468	0.00259
hsa-let-7e	-10.23285	-0.55121	0.00267
hsa-mir-374c	-17.02971	1.03372	0.00288
hsa-mir-1307	-9.91818	0.56277	0.00352
hsa-mir-150	-11.29629	0.72858	0.00388
hsa-mir-328	-13.44336	0.54627	0.00413
hsa-mir-197	-12.32177	0.49795	0.00494
hsa-mir-324	-14.81289	0.48499	0.00610
hsa-mir-766	-17.14646	0.70623	0.00627
hsa-mir-1274b	-19.18475	1.05504	0.00627
hsa-mir-3677	-17.77969	0.79682	0.00754
hsa-mir-125b-1	-11.20489	0.60816	0.01270
hsa-mir-942	-18.05142	0.73960	0.01853
hsa-mir-423	-12.70056	0.38562	0.02659
hsa-mir-339	-15.55554	0.55393	0.02659
hsa-mir-188	-17.57827	0.64209	0.02750
hsa-mir-874	-15.70586	0.95594	0.03026
hsa-mir-940	-19.15107	0.84648	0.03274
hsa-mir-24-1	-15.87684	0.50501	0.03658



KIRC 56, prenorm, tagwise dispersion, 1046 miRNAs

24 miRNAs, B-H p-val<0.05

miRNA	log ₂ (FC)	BH P-val
hsa-mir-23c	-2.124	8.00E-11
hsa-mir-326	1.051	2.04E-06
hsa-mir-99b	0.665	5.52E-05
hsa-mir-1976	0.862	9.68E-05
hsa-mir-330	0.689	0.00020
hsa-mir-1249	1.351	0.00034
hsa-let-7e	-0.584	0.00093
hsa-mir-331	0.549	0.00095
hsa-mir-3605	0.677	0.0023
hsa-mir-125a	0.527	0.0034
hsa-mir-328	0.505	0.0094
hsa-mir-1307	0.515	0.0098
hsa-mir-374c	0.993	0.011
hsa-mir-150	0.664	0.017
hsa-mir-197	0.444	0.017
hsa-mir-324	0.439	0.017
hsa-mir-1274b	1.013	0.017
hsa-mir-3677	0.744	0.020
hsa-mir-766	0.647	0.020
hsa-mir-942	0.697	0.038
hsa-mir-125b-1	0.567	0.038
hsa-let-7a-1	-0.346	0.038
hsa-let-7a-3	-0.346	0.038
hsa-let-7a-2	-0.345	0.038

